

BBTK Response Box K-RB1-4

www.blackboxtoolkit.com

1. Getting Started

The Black Box Toolkit Response Box is a USB device which allows you to connect up to four switch buttons to your computer.

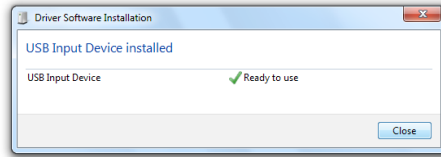
It works just like a standard *Plug and Play* keyboard so there is no need to install any drivers. Just connect it up and go.

When you press a switch button this is identical to pressing a key on a keyboard. If you have a text editor open the letter assigned to each button will be typed.

Your vendor will normally have assigned these keys. If not, the defaults are numerical keys 1 through 4.

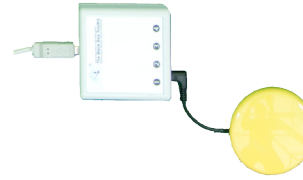
2. Plugging In

To begin, plug one end of the USB lead into the rear of the response box and the other into a free USB port on your computer. Wait a few seconds for it to be recognized for the first time. Next connect your switch buttons.

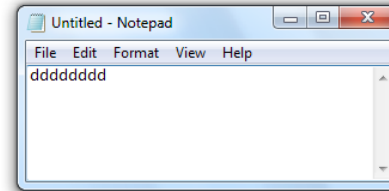


4. Testing

Testing whether your response box is working correctly is easy. Connect a switch button to the socket labeled ①



Open Notepad, or other text editor, and press the button. This is identical to pressing a key on a standard keyboard. The letter assigned to this button should be typed. If nothing appears follow the troubleshooting procedure.

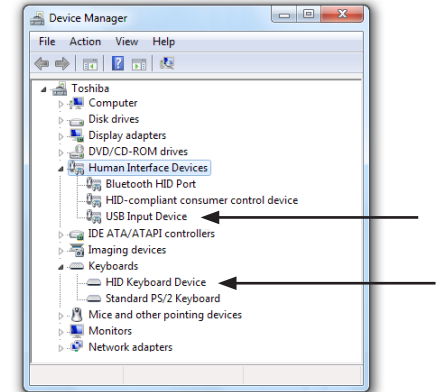


For more detailed testing you can download a specialized app from our website.

5. Troubleshooting

Ensure that you have connected the response box and switch buttons correctly as shown in the **Connecting Your Switch Buttons** photo. The very first time you connect the response box using the supplied USB cable a dialog similar to that in the **Plugging In** section should be shown. Each time you connect and disconnect the USB lead your computer should play a sound.

As a final check ensure that the response box appears as a USB Input Device and HID Keyboard in the Device Manager (Windows Control Panel).



3. Connecting Your Switch Buttons

Plug the flat end of the USB cable into your computer

Plug the square end of the USB cable into the response box

Position the response box so you can plug the switch buttons into the front panel



Where possible position your computer so that the switch buttons and response box are as neat as possible

Layout the switch buttons so that they are within easy reach and the cables are hidden where possible

Note: The layout shown is illustrative. Your layout may vary and the color and type of switch button may differ

6. Getting More Help

In the first instance you should contact your local IT support staff for help and advice.

If you are unable to resolve any issues you are having you should contact the vendor who supplied the response box or switch buttons. This is because it is likely they have customized it for their specific application.

For further troubleshooting advice and to download a specialized test app visit:

www.blackboxtoolkit.com/bbtkrb

Note: Unless you purchased your response box or switch buttons directly from the Black Box Toolkit Ltd we will be unable to offer support or process warranty exchanges. In the first instance you should contact your vendor.